

fancort Industries, Inc.

31 FAIRFIELD PLACE WEST CALDWELL, N. J. 07006 FS NUMBER /527
(973) 575-0610 WWW.FANCORT.COM FAX (973) 575-9234

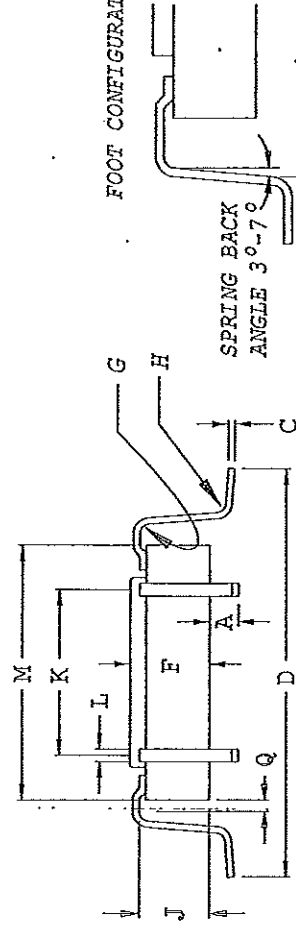
QCI-LFS3

QUAD PACK TEST SHEET

CUSTOMER TI
PART NUMBER SM470R1B1M-HI
INSPECTION SAMPLE () OF ()
DATE

INSPECTED BY

FOOT CONFIGURATIONS



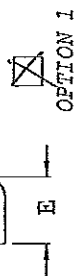
PACKAGE TYPE

TOP BRAZE

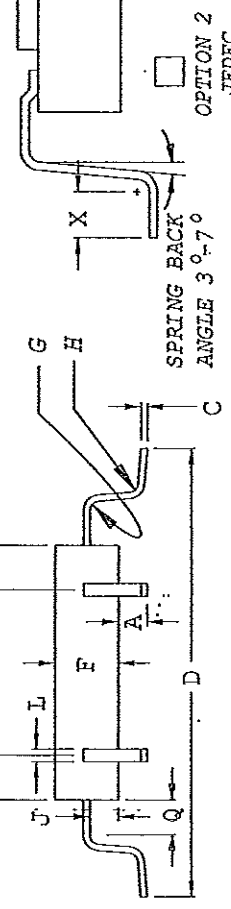
SIDE EXIT

BOTTOM EXIT

OPTION 1
OPTION 2



OPTION 1



OPTION 2
JEDEC

TEST RESULTS	REQUIRED		TOL.		DIN	DIN	Y	X
	DIN	Y	DIN	Y				
A	.008	.008	.002	.002				
C	.008	.008	MAX.					
D	.754	.754	.010					
E	.050	.050	.005					
X								
F	.105	.105	MAX.					
G	.012	.012	.002					
H	.012	.012	.002					
J	.099	.099	REF.					
K	.394	.394	TYR.					
L	.008	.008	.002					
M	.544	.544	MAX.					
Q								

PITCH	.0197	.0197
# OF LEADS PER SIDE	21	21
TOTAL # OF LEADS	84	

CONTROLLING UNITS ARE [METRIC] INCHES

LEADS TINNED YES NO

PACKAGE TYPE: METAL CERAMIC PLASTIC GLASS SEAL

LEAD TYPE: FLAT ROUND

TOE UP 0°-4°
TOE DOWN 0°-4°

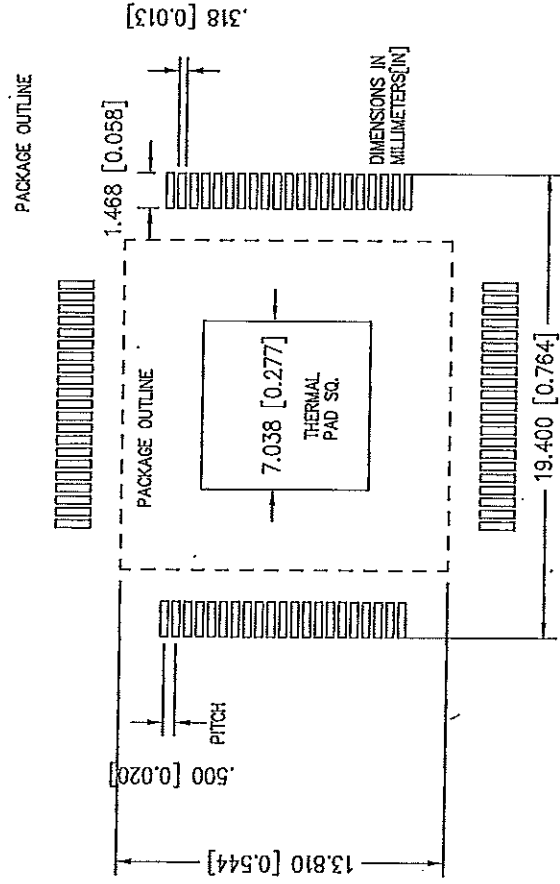
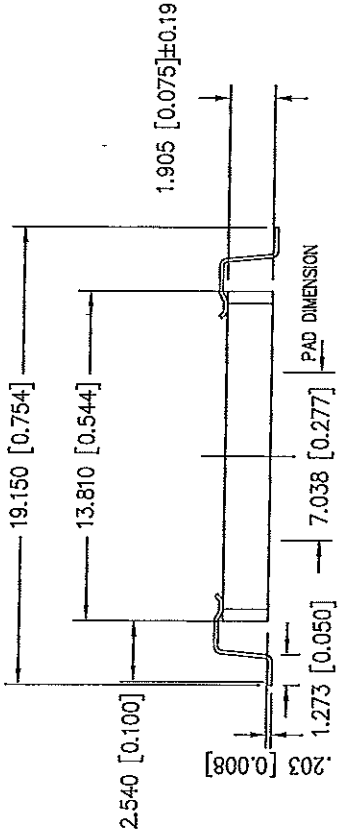
ACTUAL TOE 4

X = _____ Y = _____



CONTROLLING DOCUMENT

FS: 1488
1475



84 HFQ RECOMMENDED
FORM & FOOTPRINT