

fancort Industries, Inc.

31 FAIRFIELD PLACE

WEST CALDWELL, N.J. 07006

(973) 575-0610

WWW.FANCORT.COM

FAX (973) 575-9234

FLAT PACK SPECIFICATION SHEET

JOB NUMBER _____

MANUFACTURER NATIONAL SEMI

PART NUMBER W20A

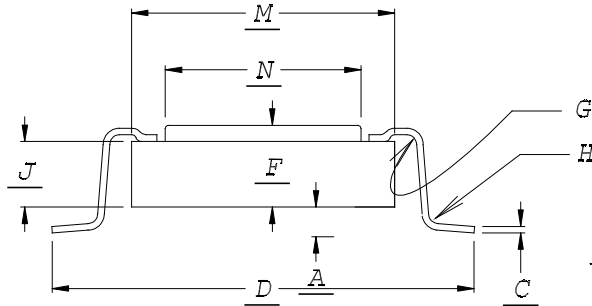
DATE 3/3/10

DRAWN BY FANCORT BC

CHECKED BY _____

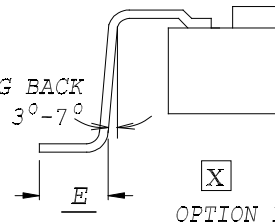
PACKAGE TYPE

TOP BRAZE



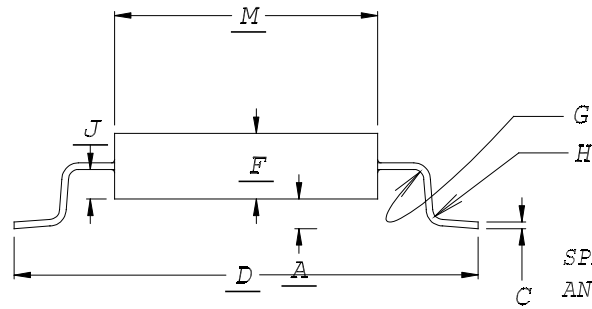
FOOT CONFIGURATIONS

SPRING BACK
ANGLE 3°-7°

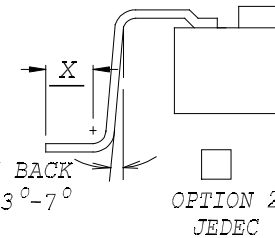


OPTION 1

SIDE EXIT

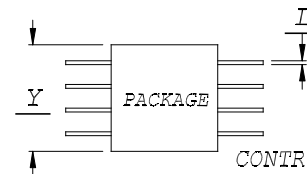
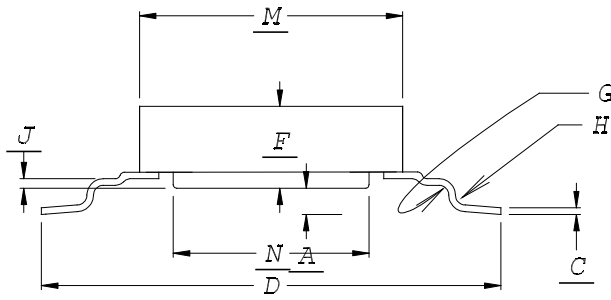


SPRING BACK
ANGLE 3°-7°



OPTION 2
JEDEC

BOTTOM EXIT



CUSTOMER SIGNATURE &
DATE FOR ACCEPTANCE _____

CONTROLLING UNITS ARE [METRIC] INCHES

LEADS TINNED YES NO

LEAD TYPE: FLAT

PACKAGE TYPE: METAL

ROUND

CERAMIC

TOE UP 0°-4°

PLASTIC

DOWN 0°-4°

GLASS SEAL

	DIM.	+/-
A	.010	.002
C	.005	.001
D	.485	.010
E	.050	.005
OPTION 1		
OPTION 2	X	-----
F	.090	MAX
G	.010	.002
H	.010	.002
J	.035	.005
M	.285	MAX
N	-----	-----
PACKAGE LENGTH	Y	.540 MAX
LEAD WIDTH	L	.019 TYP
PITCH		.050
# OF LEADS PER SIDE		10