

fancort Industries, Inc.

31 FAIRFIELD PLACE

WEST CALDWELL, N.J. 07006

(973) 575-0610

WWW.FANCORT.COM

FAX (973) 575-9234

FLAT PACK SPECIFICATION SHEET

FA NUMBER _____

MANUFACTURER _____

LINEAR TECHNOLOGY

PART NUMBER _____

W (14 LEADS)

DATE _____

12/16/08

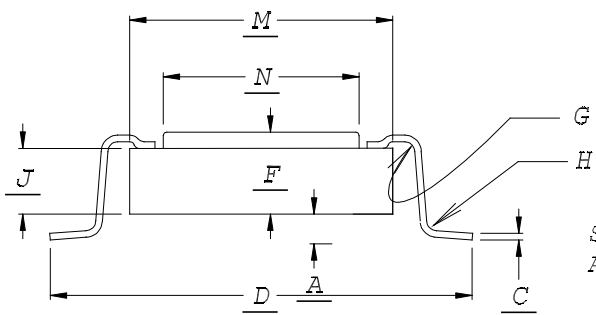
DRAWN BY FANCORT _____

BC

CHECKED BY _____

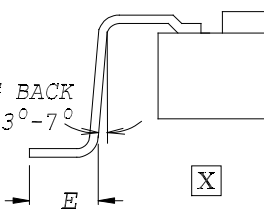
PACKAGE TYPE

TOP BRAZE



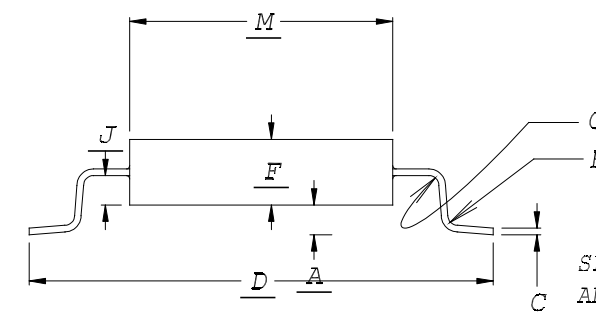
FOOT CONFIGURATIONS

SPRING BACK
ANGLE 3°-7°

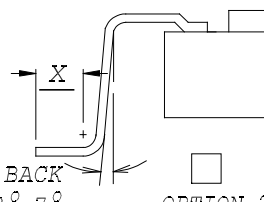


OPTION 1

SIDE EXIT



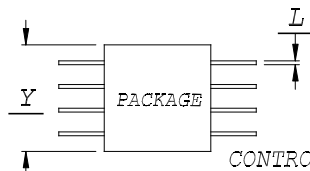
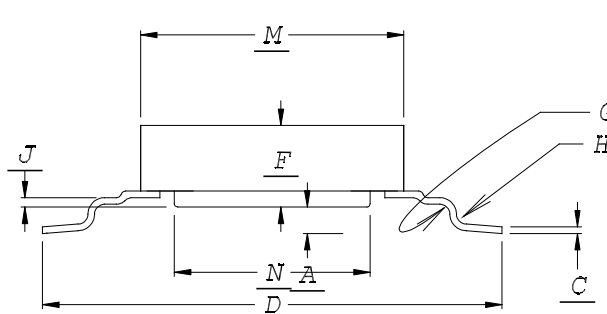
SPRING BACK
ANGLE 3°-7°



OPTION 2

JEDEC

BOTTOM EXIT



CUSTOMER SIGNATURE &
DATE FOR ACCEPTANCE _____

CONTROLLING UNITS ARE [METRIC] INCHES

LEADS TINNED YES NO

LEAD TYPE: FLAT

PACKAGE TYPE: METAL

ROUND

CERAMIC

TOE UP 0°-4°

PLASTIC

DOWN 0°-4°

GLASS SEAL

	DIM.	TOLERANCE
A	.010	.002
C	.009	MAX
D	.510	.010
E	.050	.005
OPTION 1		
OPTION 2	X	-----
F	.090	MAX
G	.010	.002
H	.010	.002
J	.035	.010
M	.300	MAX
N	-----	
PACKAGE LENGTH	Y	.405 MAX
LEAD WIDTH	L	.017 TYP
FINCH		.050
# OF LEADS PER SIDE		7