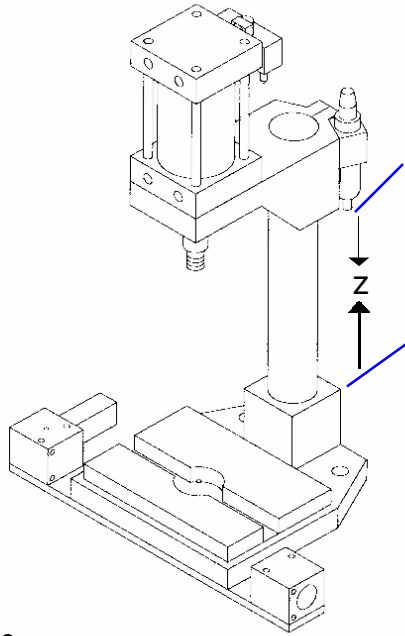


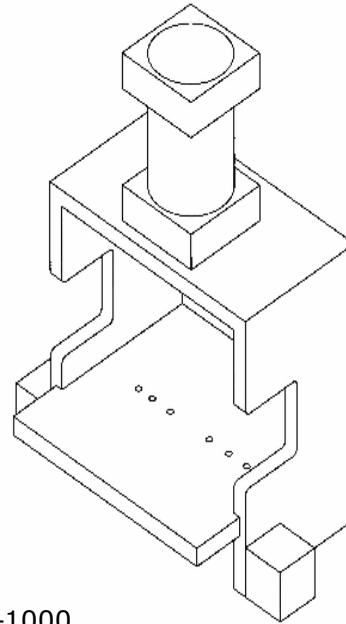
# BUILD YOUR OWN PRESS

**Contact Info:**  
 Customer: \_\_\_\_\_  
 \_\_\_\_\_  
 \_\_\_\_\_



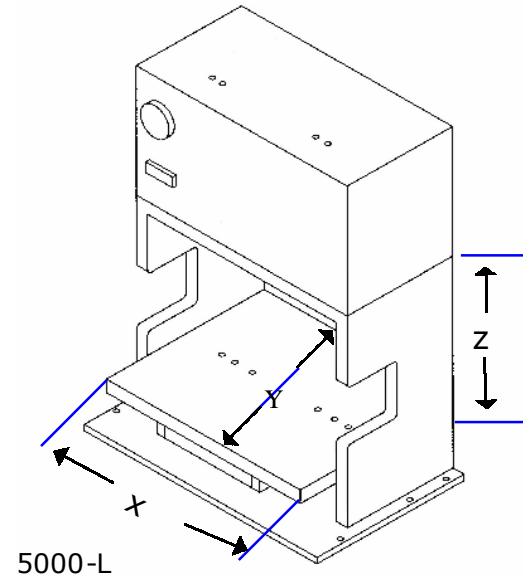
BP-500

- \_\_\_\_\_ Timer Circuit
- \_\_\_\_\_ Low pressure option 0-50 lbs.
- \_\_\_\_\_ Non-Rotating Ram
- \_\_\_\_\_ 4" cylinder up to 1175 lbs
- \_\_\_\_\_ Stroke Desired (3" Std)
  - Up to 9" Max
- \_\_\_\_\_ Higher Die Clearance "Z"
- \_\_\_\_\_ Double ended cylinder to be



BP-1000

- \_\_\_\_\_ Timer Circuit
- \_\_\_\_\_ Non-Rotating Ram
- \_\_\_\_\_ 6" Cylinder (1.4 ton)
- \_\_\_\_\_ Double-ended cylinder w/stops for stroke ctrl.
- \_\_\_\_\_ Stroke Desired (4" Std)
  - Up to 9" Max
- \_\_\_\_\_ Optional Upgrade Kit



5000-L

- \_\_\_\_\_ Timer Circuit
- \_\_\_\_\_ Non-Rotating Ram
- \_\_\_\_\_ 6" Cylinder (1.4 ton)
- \_\_\_\_\_ Stroke Desired (4" Std)
  - Up to 9" Max
- \_\_\_\_\_ Wide Model w/22" Bed
- \_\_\_\_\_ Model 5000L-8
  - 2.5 ton
- \_\_\_\_\_ Model 5000L-10
  - 5.0 ton, 60 sec cycle
- \_\_\_\_\_ Model 6000 SP
  - 4.95 ton, 3 sec cycle
- \_\_\_\_\_ Custom Internal Sizes
  - X \_\_\_\_\_ Y \_\_\_\_\_ Z \_\_\_\_\_

Note: This document will print with full lines. To see lines online view at 150% to 200%.