

# fancort Industries, Inc.

31 FAIRFIELD PLACE

WEST CALDWELL, N. J. 07006

(973) 575-0610

WWW.FANCORT.COM

FAX (973) 575-9234

## QUAD PACK SPECIFICATION SHEET

FA NUMBER \_\_\_\_\_

CUSTOMER \_\_\_\_\_

PART NUMBER **240 CERQUAD**

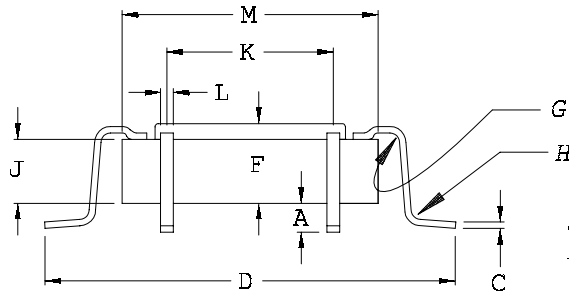
DATE **9/15/03**

DRAWN BY FANCORT **BMC**

CHECKED BY \_\_\_\_\_

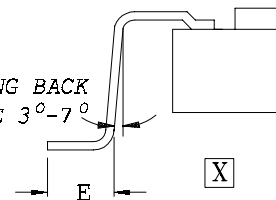
PACKAGE TYPE

TOP BRAZE



FOOT CONFIGURATIONS

SPRING BACK  
ANGLE  $3^{\circ}-7^{\circ}$

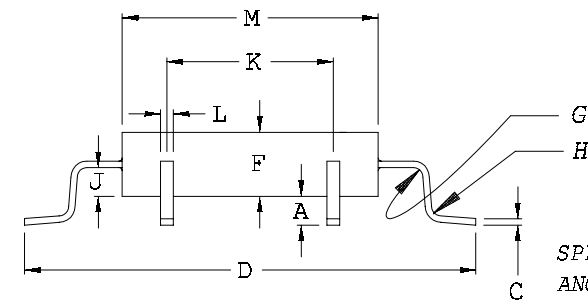


OPTION 1

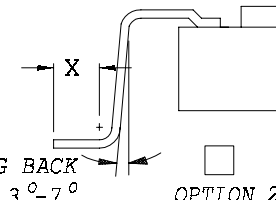
OPTION 1

OPTION 2

SIDE EXIT

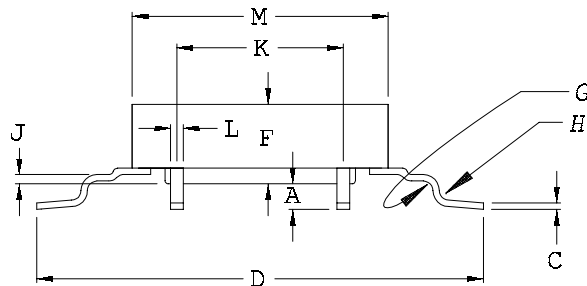


SPRING BACK  
ANGLE  $3^{\circ}-7^{\circ}$



OPTION 2  
JEDEC

BOTTOM EXIT



|                        | DIM<br>X | DIM<br>Y | TOLERANCE |
|------------------------|----------|----------|-----------|
| A                      | .010     | .010     | .002      |
| C                      | .006     | .006     | .002      |
| D                      | 1.562    | 1.562    | .010      |
| E                      | .040     | .040     | .005      |
| F                      | .159     | .159     | MAX       |
| G                      | .010     | .010     | .002      |
| H                      | .010     | .010     | .002      |
| J                      | .126     | .126     | .013      |
| K                      | 1.161    | 1.161    | BSC       |
| L                      | .008     | .008     | .002      |
| M                      | 1.352    | 1.352    | MAX       |
| PITCH                  | .0197    | .0197    |           |
| # OF LEADS<br>PER SIDE | 60       | 60       |           |
| TOTAL<br># OF LEADS    | 240      |          |           |

CUSTOMER SIGNATURE &

DATE FOR ACCEPTANCE \_\_\_\_\_

CONTROLLING UNITS ARE [METRIC ] INCHES

LEADS TINNED  YES  NO

LEAD TYPE: FLAT

PACKAGE TYPE: METAL

ROUND

CERAMIC

TOE UP   $0^{\circ}-4^{\circ}$

PLASTIC

DOWN   $0^{\circ}-4^{\circ}$

GLASS SEAL